



Steps to safety: a checklist to help you buckle up your child

Baby/Toddler

Face rear as long as possible (at least age 2 or more)

1 Selection

- Rear-facing-only seat or rear-facing convertible.



2 Direction

- Recline seat and face the back of the car. Don't worry about feet touching vehicle seat.

3 Location

- Install in the back seat.
- Never** place in front of an air bag.



4 Adjust harness

- Place harness straps at or below shoulder level.
- Check harness instructions carefully – does the harness have short and long lengths?
- Move buckle strap, if necessary.



5 Installing your seat

- Put belt through rear-facing belt path on seat or base (if using base with rear-facing-only seat) **OR**
- Put lower connector strap through rear-facing belt path or base.
- Buckle, lock* and tighten** the belt **OR** attach lower connector strap to anchors** and tighten.
- Check angle of seat:
 - Head does not flop forward
 - Inch of plastic above head
- Check tightness – seat moves less than 1 inch to sides or front of car.

6 Buckling up your child

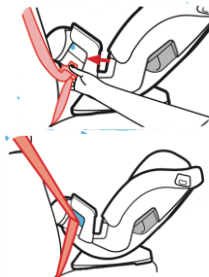
- Add or remove padding – check weight limits.
- Buckle harness at crotch.
- Tighten harness until snug; do the pinch test.
- Chest clip at armpit level.
- Check harness straps at or below shoulder level.



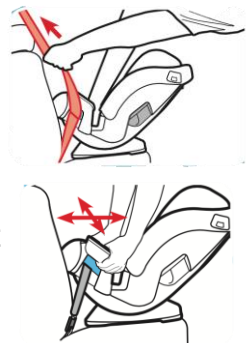
* How to lock your safety belt

BUCKLE ✕ **LOCK** ✕ **TIGHTEN**

- Find the safety belt path on the safety seat for rear facing. (Check instructions.)
- Thread the belt through the belt path and buckle it.
- Slowly pull the belt all the way out at the top, then feed it back in a little. If you can't pull it out again, the belt is now locked.

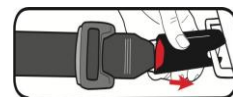


- Press the safety seat into the vehicle seat. Tighten the belt by feeding all the slack back into the top.
- Check seat is tightly installed. Pull to side and front above the belt path. Seat should not move more than 1 inch.



** Attaching the lower connectors

- Attach connectors to lower bars in vehicle. Tighten.



Belts in most cars made since 1996 lock this way. **IMPORTANT:** if your belt does not lock in this way, call SafetyBeltSafe U.S.A.

SafetyBeltSafe U.S.A

800/745-SAFE ♦ Spanish: 800/747-SANO ♦ www.carseat.org



Steps to safety: a checklist to help you buckle up your child

Preschoolers – at least 2 years – 6 years old Forward-facing with harness

1 Selection

- Forward-facing seat with harness.
Most fit up to 50–80 lbs.



2 Direction

- Install in upright position, facing front of the car.

3 Location

- Install in the back seat.
- May install in the front **only** if all rear seats are occupied by other children. Move vehicle seat as far back as possible.

4 Adjust harness

- Place harness straps at or above shoulder level.
- Move buckle strap, if necessary.



5 Installing your seat

- Put belt through forward-facing belt path **OR**
- Put lower connector strap through forward-facing belt path.
- Buckle, lock* and tighten** the belt **OR** attach lower connector strap to anchors** and tighten.
- Check angle of seat:
 - Upright, or reclined if manufacturer allows.
- Check tightness – seat moves less than 1 inch to sides or front of car.
- Attach tether strap to anchor.

6 Buckling up your child

- Add or remove padding – check weight limits.
- Buckle harness at crotch.
- Tighten harness until snug; do the pinch test.
- Chest clip at armpit level.
- Check harness straps at or above shoulder level.



* How to lock your safety belt

BUCKLE ✕ **LOCK** ✕ **TIGHTEN**

- 1 Find the safety belt path on the safety seat for forward facing. (Check instructions.)



- 2 Thread the belt through the belt path and buckle it.



- 3 Slowly pull the belt all the way out at the top, then feed it back in a little. If you can't pull it out again, the belt is now locked.



- 4 Press the safety seat into the vehicle seat. Tighten the belt by feeding all the slack back into the top.

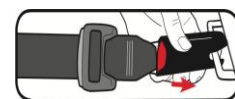


- 5 Check seat is tightly installed. Pull above the belt path to sides and front of car. Seat should not move more than 1 inch.



** Attaching the lower connectors

- Attach connectors to lower bars in vehicle. Tighten.



Belts in most cars made since 1996 lock this way. **IMPORTANT:** if your belt does not lock in this way, call SafetyBeltSafe U.S.A.

SafetyBeltSafe U.S.A.


800/745-SAFE ♦ Spanish: 800/747-SANO ♦ www.carseat.org



Steps to safety: a checklist to help you buckle up your child

Booster Kids (at least age 5 to 10-12 years old)

1 Selection

- Highback booster
 - Backless booster seat (with car head restraint)
-  Never use without head restraint.





2 Direction

- Facing front of the car

3 Location

- Back seat of car

4 Installation

- Use shoulder-lap belt to buckle up child.
-  Read instructions to learn how to route belt correctly.
-  Never use with just a lap belt.

Kids in safety belts (From age 10-12 years old)

Do the 5-Step Test to check if your child can ride safely in a vehicle belt:

1. Does your child sit all the way back against the auto seat?
2. Do your child's knees bend comfortably at the edge of the auto seat?
3. Does the belt cross the shoulder between the neck and arm?
4. Is the lap belt as low as possible, touching the thighs?
5. Can your child stay seated like this for the whole trip?



SafetyBeltSafe U.S.A

800/745-SAFE ♦ Spanish: 800/747-SANO ♦ www.carseat.org