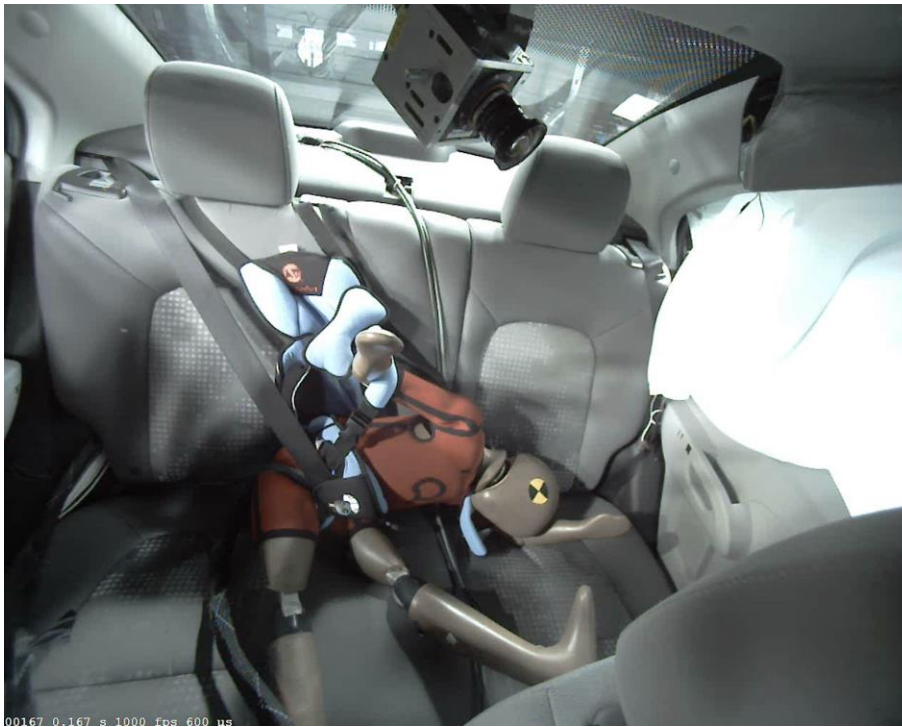


Ever wonder if it's worth it to use a crash-tested safety seat for your child?

The photos below show a side-impact crash test at 32 km/h (almost 20 mph), striking on the driver's side, with a seat attached with the shoulder-lap belt. See what happens in 167 milliseconds into the crash. Would you want your child riding at such risk?

Before the side impact



167 milliseconds after the side-impact crash test

SafetyBeltSafe U.S.A. P.O. Box 553, Altadena, CA 91003 www.carseat.org
310/318-5111, 800/745-SAFE (English), 800/747-SANO (Spanish)

This document was developed by SafetyBeltSafe U.S.A. and may be reproduced in its entirety.
Important: Call to check if there is a more recent version before reproducing this document.